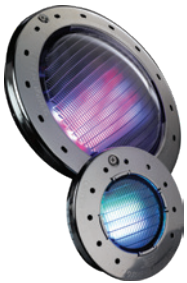




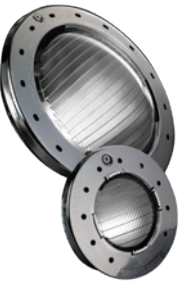
JANDY® NICHELESS LED LIGHTS WITH HYDROCOOL™ TECHNOLOGY

	Cord Length				
	Voltage	Wattage	50'	100'	150'
Nicheless LED Light - WaterColors	12V	6W	JLU4C6W50	JLU4C6W100	JLU4C6W150
	12V	12W	JLU4C12W50	JLU4C12W100	JLU4C12W150
	12V	24W	JLU4C24W50	JLU4C24W100	JLU4C24W150
Nicheless LED Light - Daylight White	12V	6W	JLUW6W50	JLUW6W100	JLUW6W150
	12V	12W	JLUW12W50	JLUW12W100	JLUW12W150
	12V	24W	JLUW24W50	JLUW24W100	JLUW24W150
Nicheless LED Light - Warm White	12V	6W	-	-	JLUWW6W150
	12V	12W	-	-	JLUWW12W150
	12V	24W	-	-	JLUWW24W150



JANDY® WATERCOLORS LED POOL AND SPA LIGHTS

	Cord Length						
	Voltage	Wattage	Face Ring	30'	50'	100'	150'
Large LED Light - WaterColors	120V	50W	Stainless	CPHVRGBWS30	CPHVRGBWS50	CPHVRGBWS100	CPHVRGBWS150
	12V	50W	Stainless	CPLVRGBWS30	CPLVRGBWS50	CPLVRGBWS100	CPLVRGBWS150
Small LED Light - WaterColors	120V	25W	Stainless	CSHVRGBWS30	CSHVRGBWS50	CSHVRGBWS100	CSHVRGBWS150
	12V	25W	Stainless	CSLVRGBWS30	CSLVRGBWS50	CSLVRGBWS100	CSLVRGBWS150



JANDY® WHITE LED POOL AND SPA LIGHTS

	Cord Length						
	Voltage	Wattage	Color Temp.	50'	100'	150'	250'
Large LED Light - White	120V	65W	Daylight	WPHV5LS50	WPHV5LS100	WPHV5LS150	WPHV5LS250
	120V	65W	Warm White	-	-	WWPHV5LS150	-
	120V	42W	Daylight	WPHV3LS50	WPHV3LS100	WPHV3LS150	-
	120V	42W	Warm White	-	-	WWPLV3LS150	-
	12V	65W	Daylight	WPLV5LS50	WPLV5LS100	WPLV5LS150	-
	12V	65W	Warm White	-	-	WWPLV5LS150	-
	12V	42W	Daylight	WPLV3LS50	WPLV3LS100	WPLV3LS150	-
	12V	42W	Warm White	-	-	WWPLV3LS150	-
Small LED Light - White	120V	18W	Daylight	WSHV1LS50	WSHV1LS100	WSHV1LS150	WSHV1LS250
	120V	18W	Warm White	-	-	WWSHV1LS150	-
	12V	18W	Daylight	WSLV1LS50	WSLV1LS100	WSLV1LS150	-
	12V	18W	Warm White	-	-	WWSLV1LS150	-



JANDY® WHITE INCANDESCENT POOL AND SPA LIGHTS

	Cord Length						
	Voltage	Wattage	Face Ring	30'	50'	100'	150'
Large Incandescent Light	120V	500W	Stainless	WPHV500WS30	WPHV500WS50	WPHV500WS100	WPHV500WS150
	120V	300W	Stainless	WPHV300WS30	WPHV300WS50	WPHV300WS100	WPHV300WS150
	12V	300W	Stainless	WPLV300WS30	WPLV300WS50	WPLV300WS100	-
	12V	100W	Stainless	-	WPLV100WS50	WPLV100WS100	-
Small Incandescent Light	120V	100W	Stainless	WSHV100WS30	WSHV100WS50	WSHV100WS100	WSHV100WS150
	12V	100W	Stainless	WSLV100WS30	WSLV100WS50	WSLV100WS100	-

*Based on most recommended status across 10+ online review sites. *Based on an aggregate number; reviews may appear on multiple websites. The entities doing business as Anthony & Sylvan Pools include Anthony & Sylvan Pools Corporation, Anthony & Sylvan Corp., Anthony & Sylvan Pools North Carolina LLC, Anthony & Sylvan's statewide licenses/registrations: #SPB.0000089 and #HIC.0501976 (CT); #2006201521 (DE); #410512000233 (DC); MHIC#129792 (MD); #13VH01546700 (NJ); #0023414 (NV); #68766 (NC); #006381 (PA); #2701011419A (VA RFC/ELE); and #WV030223 (WV).

©2020 Trademarks are the property of their respective owners. 2618_CM

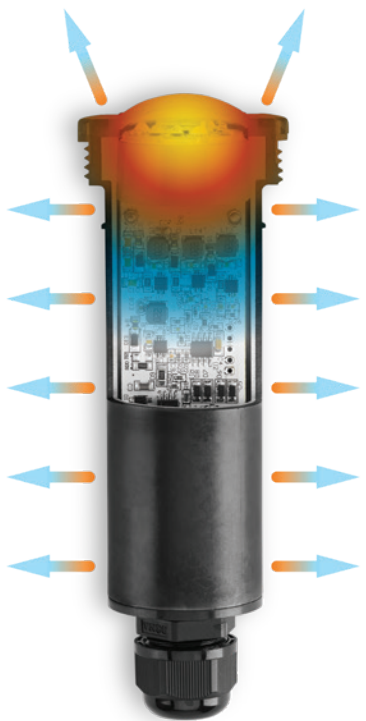
Jandy®

Brighten Your Night



1-877-Say-Swim | AnthonySylvan.com





Jandy® lights bring a palette of colors to your backyard paradise for a truly unique atmosphere. Whether swimming or just lighting up the night, you'll enjoy an endless display of brilliant, beautiful color.

Jandy® Nicheless Lights

NICHELESS LED LIGHTS

- Bright illumination that reduces energy costs using less wattage than ever before
- Lights that run cooler and last longer*
- Diffuser lens delivers consistent color, fewer hotspots, and no 'kaleidoscopes'
- Quarter moon and half moon lens covers to eliminate hard shadows/halos on the pool floor
- Multiple Color Options - 9 vibrant colors, with 5 color-changing light shows as well as bright White light and Daylight white (meets dark sky community requirements)
- Design Flexibility - Compact sizes allow you to light elaborate design features

*Based on internal testing

COOL BY DESIGN

The Jandy® WaterColors Nicheless LED Lights with NEW HydroCool technology merge innovative design and features to run cooler and last longer while providing unmatched illumination.

COST-SAVING LIGHTING

State-of-the-art LED technology uses less wattage while providing the same brilliant illumination as previous models.

BUILT TO LAST

Triple-material, unibody construction prevents leaks and maximizes durability under water.

A MORE EVEN GLOW

Diffuser lens provides better blending of light for the clearest and most consistent lighting possible.

MADE TO MATCH

Lights come standard in black with complimentary gray and white cosmetic trim ring covers to match a larger variety of pool surfaces.

Jandy® Niche Lights



COLOR LED LIGHTS

- 9 colors & 5 light shows
- 12V & 120V options
- 25W & 50W max power draw
- Stainless steel housings
- Stainless & plastic niches available
- ETL® listed for installation in ProNiche & most other competitors niches



WHITE LED LIGHTS

- Available in either Daylight or Warm White
- Multiple sizes use only 18 to 65 watts of power
- Provides equivalent brightness to 100W, 300W and 500W incandescent lights
- ETL listed for installation and compatible for use in all Jandy and most competitive niches
- Controlled by a single light switch or seamlessly interfaces with our iAquaLink® RS controls
- Both color temperatures maintain the integrity of the LED lights as a pool safety feature



INCANDESCENT LIGHTS

- Corrosion-free stainless steel housing
- Long-lasting bulbs
- Diffused tempered glass
- Available in 12V & 120V models



MOBILE CONTROL

All Jandy lights are AquaLink® compatible, enabling you to use the iAquaLink® mobile app* for anytime, anywhere control from your smartphone or mobile device. With the FREE iAquaLink® app, you can select colors and settings right from your smartphone.

To learn more, or to download the app, visit iAquaLink.com.

* May require additional equipment. AquaLink® RS Firmware Rev R or newer, AquaLink® PDA Firmware Rev 6 or newer

STANDARD LIGHT ACCESSORIES

- Plastic niches available in two sizes for gunite pools & spas
- Stainless steel niches available in two sizes for gunite pools & spas
- Plastic ProNiche available for vinyl & fiberglass pools (not shown)
- Internal and external bonding/grounding lugs



Plastic



Stainless Steel